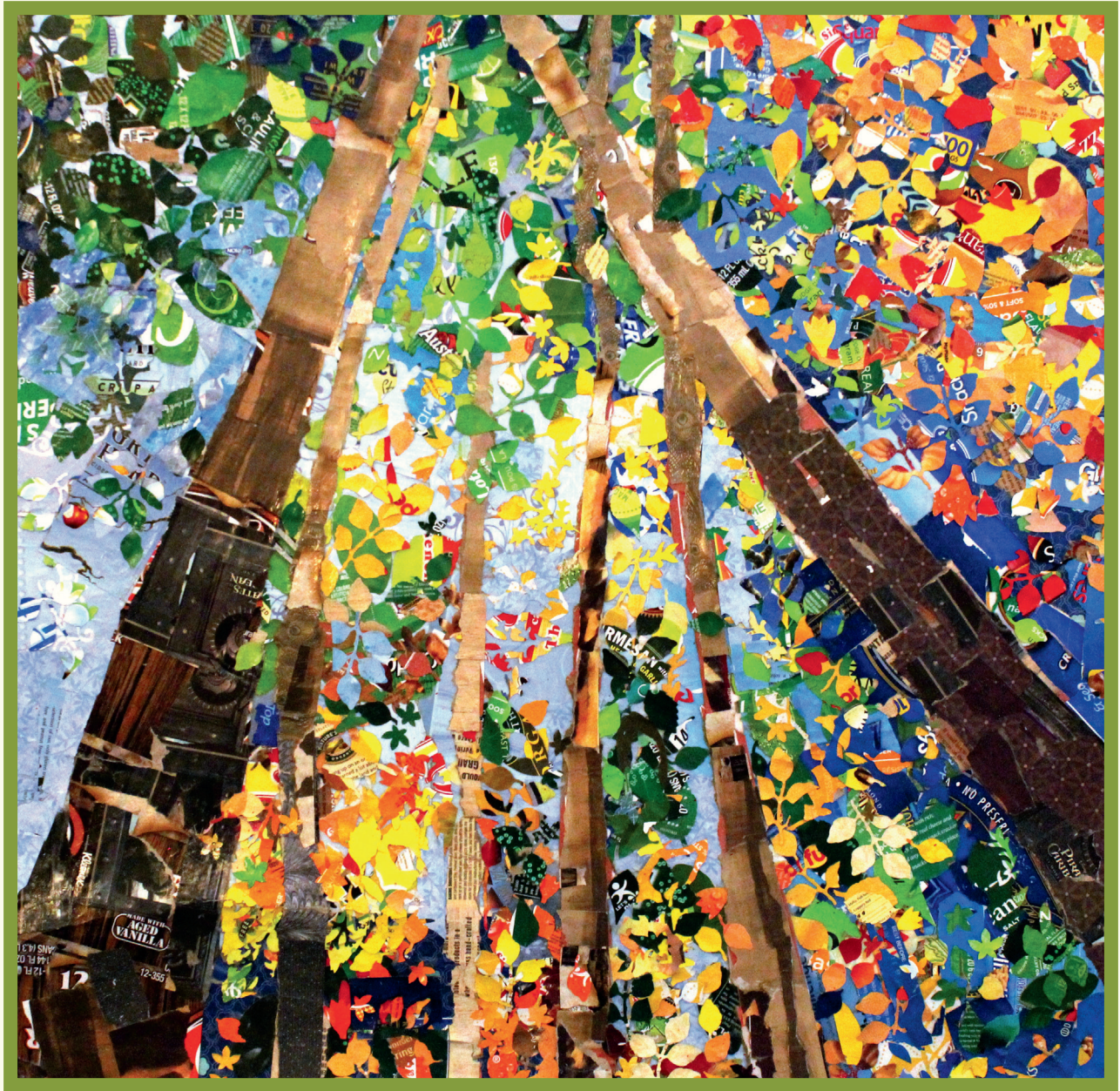


The Community Foundation
for the Greater Capital Region



**making more
good possible**

2024



AUTUMN CANOPY

The cover is a collaborative piece purchased from the Creative Endeavors Art Center, an affiliate of Saratoga Bridges, the Saratoga County Chapter of NYSARC.

The Center cultivates the talents of individuals challenged by developmental disabilities such as autism, cerebral palsy, neurological impairment, and traumatic brain injury.

At Creative Endeavors, many artists enjoy making collaborative works. These pieces are part of a series of torn cardboard collages. The artists use everyday items like cardboard boxes, to create collages. The effect of the torn cardboard is quite painterly, and the pieces transform at different viewing distances.

Photo Credits:
 Cover: Creative Endeavors Art Center/Saratoga Bridges
 Pages 2-3: Hudson Valley Community College
 Page 6 L-R: Boys and Girls Clubs of Schenectady, Schoharie River Center, Inc.
 Page 7: Broadalbin-Perth Central School District
 Page 8: Dylan Rossiter, Inset: Knickerbocker News Staff Photo/
 Times Union Historic Images
 Pages 10-11, 20, 25-27: Jayana LaFotos
 Page 12-13: Audited Financials, BST & Co.
 Page 15: Judith Fetterley
 Page 16: The Mirel Family
 Page 18: Capital Roots
 Page 19: Capital Roots, Sidewalk Warriors
 Page 29: Caffe Lena
 Design: Serena Fox Design Company
 Print/Distribution: Villanti Printers



Dear Friends,

The Community Foundation exists to strengthen our community through philanthropy. We live at the intersection of smart and generous people, financial advisors who know how to best serve their clients, and nonprofits making the biggest impact for good in our community.

- Fund advisors receive best-of-class service and support to connect to the causes they care about most.
- Professional advisors receive expert giving solutions that deliver multiplied social return on investment for their clients.
- Area nonprofits receive needed grants, training and services to achieve their missions in our community.
- Rising student scholars receive much needed scholarships to fuel their future success in careers and life.
- Our whole community benefits from an ever-growing funding source that will live and give in perpetuity to the place we call home.

If you have not done so already, please take a deeper look at what we can do together. Tap into our extensive community knowledge, our growing and diverse network of leaders who care, and the many other resources we manage and grow for our shared success.

Thank you for your ongoing investment in the place we call home. Together we are growing a community where everyone has hope and opportunity to thrive.

Simply put, together with donors like you, we are **making more good possible.**

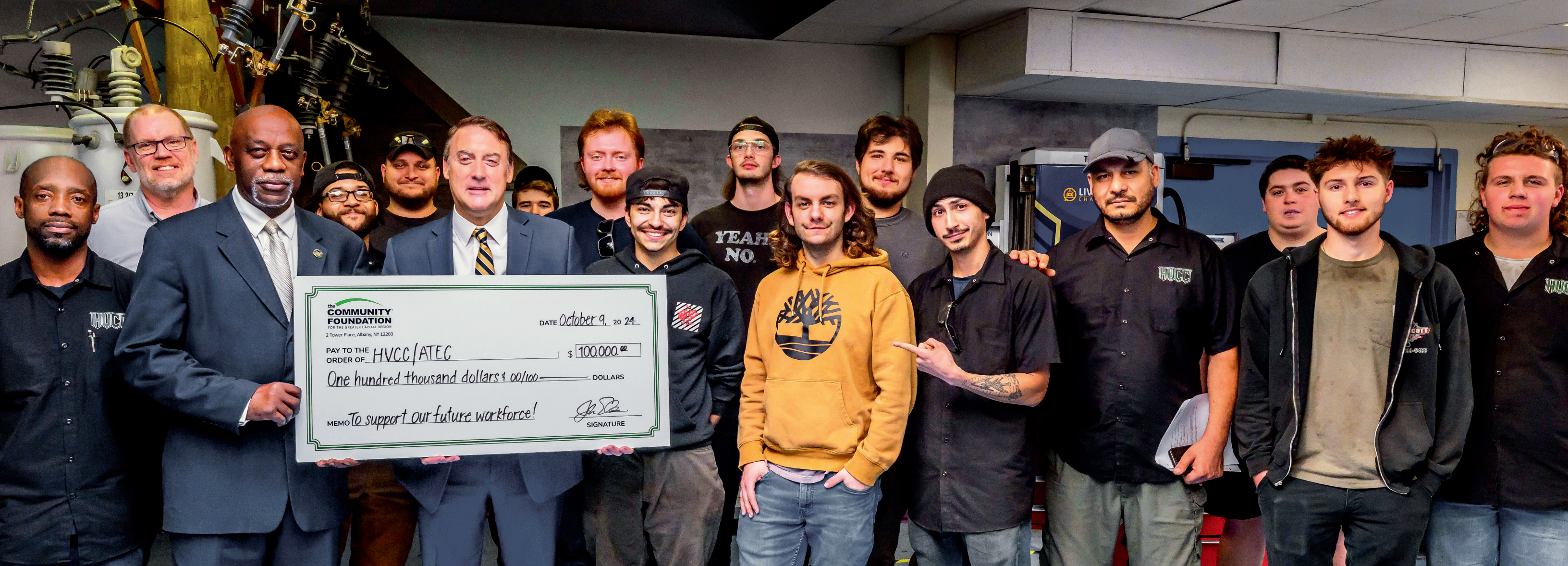
With gratitude,

John Eberle
 President & CEO

Belinda Hilton
 Chair, Board of Directors

Contents

Community Impact Awards	2-7	Judith Fetterley Advised Fund	14-15
Rockwell		Mirel Family Fund	16-17
Everson		Rubin Community Health Fund	18-21
Bender Scientific		Community Initiatives	22-25
Gene Robb Scholarship	8-9	Catalyst for Change	26-27
Board Leadership	10-11	Partnerships	28
Financials	12-13	Preserving Caffe Lena	29



Community Impact Funds

A Family of Funds Committed to the Future

Our Community Impact Funds were created by donors who cared deeply about our region and wanted to leave a positive legacy.

Community Impact Funds provide unrestricted grants for nonprofits that address pressing local needs and help to fortify them so that our region thrives.

We refer to this circle of funding as a family. It is a combination of large and small funds with the shared goal of addressing emerging needs. Gifts

to create individual funds and gifts to the broader unrestricted fund are pooled together to serve the Capital Region in perpetuity. Donors are assured that their dollars address the most critical community challenges and innovative local initiatives.

Donating directly to the general Community Impact Fund or creating a fund in your name to support unrestricted grantmaking serves a vital purpose, especially as the community changes and evolves.

Community Impact Fund Supports Workforce Training

Grant prepares students for successful careers in the trades and technology, expanding the workforce pipeline

In October the Community Foundation presented a \$100,000 grant to support the Applied Technology Education Center (ATEC) at Hudson Valley Community College. The grant represents one of the largest single investments designated from the Foundation's Community Impact funds.

"Investing in education and training so that everyone can thrive is one of the best investments we can make in our future. This gift was the result of many individuals who left a piece of their estate to have a positive impact.

We look forward to seeing the many ways this gift will inspire students and support business leaders willing to build their dreams here in the Capital Region."

—John Eberle
President & CEO

\$551,689

In 2024, Community Impact Funds supported 58 grants to the following organizations:

A Dapple A Day Equine Center
 Agricultural Stewardship Association
 Albany Fund for Education
 Bindlestiff Family Variety Arts, Inc.
 Bring on the Spectrum, Inc.
 Can Code Communities
 Capital City Rescue Mission
 Capital District YMCA
 Capital Region Youth Tennis Foundation/15-LOVE
 CAPTAIN Community Human Services
 CEK RN Consulting
 Chasing Health, Inc.
 Columbia County Recovery Kitchen
 Creative Living Solutions, Inc.
 Crossroads Center for Children

Empire State Youth Orchestra
 Epilepsy Foundation of Northeastern New York
 Equinox, Inc.
 Grassland Bird Trust
 Grassroot Givers
 Greene Land Trust
 Home Earth Alliance
 Homeless and Travelers Aid Society (HATAS)
 Hudson Valley Community College Foundation
 Interfaith Partnership for the Homeless (IPH)
 Joseph's House and Shelter
 Justice For Orphans, Inc.
 Literacy Volunteers of Rensselaer County
 New Dimensions in Living, Inc.
 Nurses Middle College-Capital Region

Pitney Meadows Community Farm
 Refugee Welcome Corporation
 Regional Food Bank of Northeastern New York, Inc.
 Rensselaer Plateau Alliance (Hudson Taconic Lands)
 Russell Sage College
 Saratoga PLAN
 Schenectady Community Action Program
 Schoharie River Center, Inc.
 Senior Hope Counseling, Inc.
 Sidewalk Warriors
 Special Olympics New York, Inc.
 St. Catherine's Center for Children
 St. Paul's Center
 Sunhee's Community Place, Inc.
 The Arts Center of the Capital Region
 The Children's Museum at Saratoga
 The Legal Project
 The Open Door
 The Pine Hollow Arboretum
 The Walter Elwood Museum
 The Wesley Foundation
 Trinity Lutheran Church

Unity House of Troy, Inc.
 Upper Hudson Planned Parenthood, Inc.
 Warriors on Wheels Inc.
 Whitney M. Young, Jr. Health Center
 Young Parents United, Inc.
 YWCA NorthEastern NY

Grants and Initiatives Committee:

Murray C. Massry, Chair
 Jean Bedell, CPA/PFS, CFP
 Aimee Dake
 Charles Day*
 Eldon Harris, CRPC, CPWA
 David Hollander
 Meaghan E. Murphy, Esq.
 Chet Opalka
 Brenda Osorio, Esq.
 Walter Thorne

*non-board member,
 approved by the
 CFGCR Board



Marjorie Doyle Rockwell

Her legacy continues to make more opportunity possible

Mrs. Rockwell made her home in the Albany area for most of her adult life and when she died in 1995, she expressed her love for the community through generous bequests totaling more than \$10 million to 18 nonprofit organizations across the Capital Region.

Included in those bequests was a \$1,879,951 gift to the Community Foundation to establish the Marjorie Doyle Rockwell Fund for the Disabled. Mrs. Rockwell understood the challenges of living with disabilities and knew that she was fortunate to be able to provide the care her loved ones needed.

The Community Foundation has a long history of supporting families and expanding opportunities for people with disabilities, in large part a credit to the fund created by Mrs. Rockwell. The impact of her gift goes beyond what any of our team—or perhaps even Mrs. Rockwell—could have imagined nearly 30 years ago.

The Community Foundation is honored to carry on Mrs. Rockwell's legacy, ensuring that everyone has access and opportunity to live to their full potential.

Marjorie Doyle Rockwell Fund

Established 1995
\$1,879,951

300 Grants Distributed
\$2,466,560

Balance Today
\$2,921,432

“Our Grants and Community Initiatives committee takes great pride in honoring our donors’ legacies through our annual Community Impact grantmaking. Each fund plays a crucial role in creating a complete and vibrant picture of community well-being.”

—Shelly Connolly
 Vice President, Community Grantmaking

Helen K. Everson Fund

Making more possible in her hometown of Amsterdam, New York

Born in 1913, Helen Everson spent her childhood in Amsterdam. She was able to pursue her education and have a career in social services.

Through her work she understood the struggles of those living in poverty. It was important to Mrs. Everson to leave something behind to help provide education for the children in her hometown and to support basic needs to lessen the burden on families.

Established in 2006, the Helen K. Everson Fund supports programs that benefit the residents of Amsterdam in perpetuity.

Helen K. Everson Fund

Establishing Gift
\$431,757

Grants Distributed
\$319,201

Balance Today
\$645,961



Bender Scientific Fund

Advancing educational research and discovery

Bender Hygienic Laboratory, founded in 1895 in Albany, was the first not-for-profit public health, medical, educational and research laboratory in the nation. It was named for Matthew W. Bender, who donated \$20,000 to construct the South Lake Avenue laboratory. It pursued those fields successfully until it closed in 1997, when it donated its book of business and equipment to St. Peter's Hospital. The residual \$1.7 million was donated to establish the Bender Scientific Fund at the Community Foundation for the Greater Capital Region in 2002.

The Community Foundation benefits from the knowledge and expertise of a committee of former Bender Trustees and employees who guide the selection of funding targets to support and promote discovery and development in medicine, science and technology in the Capital Region.

Throughout the Bender Scientific Fund's 22-year history with the Community Foundation, the Fund has provided 225 grants totaling \$1.7 million. The balance of the Bender Scientific Fund has grown to \$2.8 million, surpassing the original gift to ensure a legacy of scientific discovery.

"The great success of the Community Foundation's stewardship of the Bender Laboratory donation has been gratifying to the Laboratory's former Trustees and employees. The projects and people assisted have advanced the educational and research goals that guided the Laboratory's century of service."

—Jeffrey D. Hubbard, M.D.
Former Director,
Bender Hygienic Laboratory

Total Gifts
\$1,656,431

Total Grants
\$1,704,659

Balance Today
\$2,836,051

Gene Robb Journalism Scholarship

Legacy Supports the Next Generation of Journalists

Kevin McGoldrick was never able to meet his grandfather Gene Robb, storied publisher of the *Times Union* and *Knickerbocker News* from 1953-1969. However, through his participation in the selection committee, he is able to connect with his grandfather's legacy each year. His mother,

“Even though my mother and I come from different generations and consume media very differently, at the heart of this process is honoring the ethos of my grandfather. On that, we can always agree.”

—Kevin McGoldrick,
Gene Robb Journalism Scholarship
Selection Committee

Victoria McGoldrick, Gene Robb's daughter, leads the committee along with several of Mr. Robb's former colleagues and friends.

In 1995, Lee Robb, Gene's wife, established the Gene Robb Journalism Scholarship to support students interested in pursuing a career in journalism. As the Committee approaches 30 years of presenting the scholarship, they are focused on supporting a new generation of journalists. From print newspapers to podcasting and influencing, the landscape has changed but the one thing that remains vital is access to timely, accurate, and unbiased information.

Dylan Rossiter, a native of Schodack and journalist working in Boston, MA, received the scholarship in 2017 and 2018. When planning for college and applying for financial aid, he was surprised to learn of a scholarship for journalism students. “This scholarship helped bridge the gap between financial aid and loans, allowing me to purchase the supplies I needed to get started at Emerson College” said Rossiter.

Gene Robb's legacy continues on, not only through this annual scholarship but with his great granddaughter, a journalism student at Brown University and writer for the *Brown Daily Herald*.

Total Gifts
\$73,411

Total Scholarship Awards
\$55,800

Balance Today
\$130,891



Photo: Dylan Rossiter, 2017/18 Robb Scholar.
Inset: Gene Robb, the *Times Union's* publisher, at right with McGeorge Bundy, a special advisor to President John F. Kennedy, in October 1963.

Board of Directors



"My life has been blessed because people gave, put in time, and poured into my life. I hope to have the same impact in my work with the Community Foundation."

—Belinda Hilton, Chair

- Belinda Hilton, *Chair*
- Alicia Lasch, *Immediate Past Chair*
- Robert Reynolds, Esq., *Secretary*
- Robert Hennes, *Treasurer*
- Jean Bedell, CPA/PFS, CFP, *Vice Treasurer*
- M. Christian Bender, *Governance*
- Christopher Cimijotti, CPA, *Audit*
- David Craft, Esq., *Scholarship*
- Murray Carl Massry, *Grants and Initiatives*

- Robert F. Audi, CPA
- Aimee Dake
- Eldon Harris, CRPC, CPWA
- David Hollander
- Heidi Knoblauch, Ph.D.
- Eileen McLoughlin
- Meaghan E. Murphy, Esq.
- Chet Opalka
- Brenda Osorio, Esq.

- Walter Thorne
- Alex Zhang, CPA

Board of Directors pictured above; beginning top, left to right.

Emeritus Directors pictured right; beginning top, left to right.

Emeritus Directors



- Phoebe Powell Bender
- Marvin A. Freedman
- Barbara Linell Glaser, Ed.D.
- Barbara K. Hoehn
- Paul Hohenberg
- A.C. Riley
- Ellen Sax

"I'm so pleased to see the growth of the Foundation from humble beginnings to what it is today. There were so many generous leaders, businesses and banks that helped us get started. To see our growth and know how impactful the Foundation is today is very special. I feel proud to be a part of the Community Foundation."

—Marvin A. Freedman

Professional Advisor Council

- Jean Bedell, CPA/PFS, CFP, *Co-Chair*
- Robert Reynolds, Esq., *Co-Chair*
- Anthony J. Capobianco, ChFC, CLU
- Christopher Cimijotti, CPA
- Steven M. Egna, ASA, CM&AA
- Audra Higgins
- Charles M. Joseph, CAP

- Alicia Lasch
- William M. McCartan
- Amy S. O'Connor, Esq.
- William D. Pfeiffer, Esq.
- Louis W. Pierro, Esq.
- Jeffrey Rosenbaum, JD, CPA
- Ann M. Sharpe, Esq.



Foundation Team

- Shelly Connolly, *VP Community Grantmaking*
- Jenna Cuilla, *Dir., Advancement Operations and Communications*
- Mindy Derosia, *VP Development*
- John Eberle, *President & CEO*
- Dylan Hall, *Dir., Strategic Initiatives*
- Melisa Logan, *Program Officer*
- Sara Mainville, *Finance and Administration Associate*
- Terry Mariano, *Chief Financial Officer*

Financial Highlights for the Fiscal Years Ending December 31



The Community Foundation remains steadfast in our commitment to strong internal controls, transparency, and accountability which we believe are fundamental to our fiduciary responsibility. The following chart provides financial figures as of December 31, 2023, with comparative information from the preceding 2022 fiscal year.

	2023	2022
ASSETS		
Cash and Cash Equivalents	\$1,637,694	\$1,850,425
Investments	\$106,880,502	\$96,668,092
Receivables	\$811,655	\$1,055,844
Split Interest Agreements	\$723,536	\$700,386
Right of Use Asset for Operating Lease, Net	\$62,162	\$167,961
Other Assets	\$347,761	\$357,181
TOTAL ASSETS	\$110,463,310	\$100,799,889
LIABILITIES		
Accounts Payable and Accrued Expenses	\$46,725	\$61,623
Grants Payable	\$114,989	\$141,126
Lease Liability for Operating Lease	\$62,162	\$167,961
Split Interest Agreements	\$230,179	\$255,759
Agency Funds	\$4,151,074	\$3,106,828
TOTAL LIABILITIES	\$4,605,129	\$3,733,297
NET ASSETS		
Without Donor Restrictions		
Available for Grants	\$32,677,158	\$31,300,595
Available for Administration	\$1,018,126	\$883,132
Endowed for Administration	\$7,314,539	\$6,606,626
	\$41,009,823	\$38,790,353
With Donor Restrictions	\$64,848,358	\$58,276,239
	\$105,858,181	\$97,066,592
TOTAL LIABILITIES and NET ASSETS	\$110,463,310	\$100,799,889

Review the Foundation's complete audited financial statement and 990: <https://www.cfgr.org/about-the-foundation/financial-info>



As a public charity, the Community Foundation adheres to the highest standards to operate both in the public view and the public interest. This is our commitment to our donors and to the communities that we serve.

2023 BY THE NUMBERS

Total Gifts:	\$6,844,107*
Total Grants & Scholarships:	\$9,079,414*
Total Assets:	\$110,463,310
Number of Gifts:	1,512
Number of Grants & Scholarships:	1,562

* Excluding fund-to-fund transfers; CFGCR 2023 Audited Financial Statement reflects Gifts: \$5,143,676/Grants:\$8,979,889

2022 BY THE NUMBERS

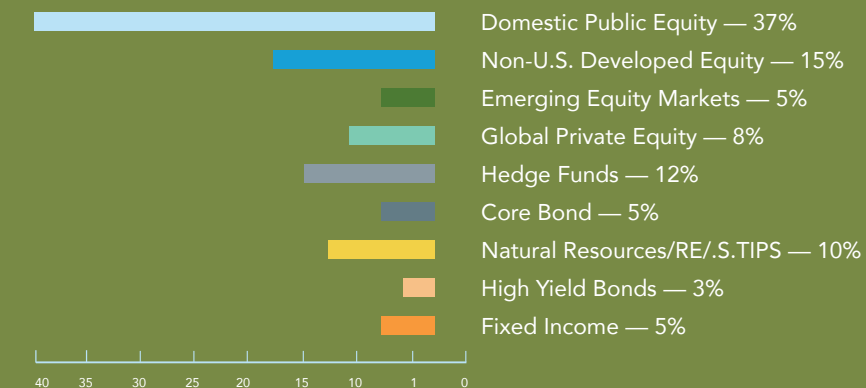
Total Gifts:	\$10,796,267*
Total Grants & Scholarships:	\$7,191,244*
Total Assets:	\$100,799,889
Number of Gifts:	1,453
Number of Grants & Scholarships:	1,467

* Excluding fund-to-fund transfers; CFGCR 2022 Audited Financial Statement reflects Gifts: \$9,631,285/Grants: \$7,166,210

A Diversified Portfolio

The Community Foundation's investment portfolio is broadly diversified and has been designed to perform well in a variety of market conditions to generate long-term growth in excess of inflation while meeting near-term spending needs.

TARGET ASSET ALLOCATION



2024 Finance Committee

Robert T. Hennes, Treasurer
 Jean Bedell, CPA/PFS, CFP, Vice Treasurer
 Belinda Hilton, Chair
 Robert S. Reynolds, Esq., Secretary
 Christopher Cimijotti, CPA, Audit Chair
 Alicia D. Lasch, Immediate Past Chair

Robert F. Audi, CPA
 William Kahn, CPA*
 Heidi Knoblauch, Ph.D.
 John A. MacAffer*
 Eileen McLoughlin
 Jeffrey M. Rosenbaum, JD, CPA*

Alex Zhang, CPA
 John Eberle, President & CEO
 Terry Mariano, Chief Financial Officer

* Non-Board Member Approved by Board of Directors



The Perennial Wisdom of Judith Fetterley

A lifelong gardener, Judith Fetterley has always enjoyed watching things grow, carefully tending the soil and her plants. Her approach to gardening mirrors her approach to giving.

"I always felt that if I was lucky enough to be placed in such a way as to end up with more than enough, that it was essential to find a way to give a little back." Such an opportunity arose in 2006, leading her to create a donor advised fund to support the organizations that Judith cared about most.

Before becoming a semi-professional gardener, Judith taught American literature, feminist theory, and expository writing at the University at Albany/State University of New York. She is the author of *Out in the Garden*, a newsletter providing reflections on the complicated interconnections between plants and people.

"I wish that we lived in a place where private citizens didn't need to step in, that everyone had what they needed to thrive: decent food, access to healthcare and the ability to freely live their lives—this is true social justice." Since, as she believes, we are not there yet, Judith chooses to support programs that focus on equity and access to basic human rights.

In a recent post, Judith wrote that money is one of the great themes of aging. If you don't have it, you struggle to get it. If you have it, you struggle with how best to use it while you are alive and after you are dead. Happily, the Community Foundation is here to help with both.

Since 2006, the Judith Fetterley Donor Advised Fund has made 420 grants to local and international organizations like Doctors Without Borders, Earth Justice, Food Pantries for the Capital District and Unity House—organizations that align with Judith's values.

The Community Foundation is honored to be a part of Judith's giving legacy, supporting the perennial needs of our community.





The Mirel Family

Building Connections to Make More Good Possible

Jeff Mirel came to the Capital Region to care for his grandfather, but it was the community that convinced Jeff and his wife Janel to set down roots and raise their family here. Jeff, who had left a job downstate at a firm that represented major label recording artists, began managing bands independently and doing freelance marketing work. “We were young and captivated by the unique opportunities the region offered,” he explained. “I think creative people are drawn here; there is room to be inventive.”

Both Jeff and Janel believe that a healthy sense of place comes from connection, and from connection, collective action. This has been a central theme of their adult lives. Both personally and professionally—Jeff is a principal at The Rosenblum Companies, a commercial real estate development and management firm, and Janel is a doctor of physical therapy. They work to build ties and foster collaborations that strengthen our community. One outsized example of that was the development of the Albany Barn, a creative economy incubator and community art center.

“Our family motto is *together we will find a way*,” said Janel. “Jeff’s vision was expansive and his energy seemingly endless, but we knew that our ‘two-gether’ needed to expand.” The couple called on friends, connections from the public and private sectors, and anyone that would listen as they worked to transform the former St. Joseph’s Academy, an abandoned school in the heart of Albany’s Arbor Hill neighborhood, into 22 low-cost live/work residences for artists, along with “maker” studios, exhibition, performance and program space. The success of this project, which is celebrating its tenth year, led to the subsequent addition of the Electric City Barn and Artistry Studios makerspaces, both in Schenectady.

Jeff and Janel have involved their daughters, Alexandra (12) and Josephine (8), in the big causes they have championed but also regular service. “We hope that collectively, these experiences will help to provide them a broader world view and an appreciation for the value of investing in others, starting in our own backyard,” added Jeff.

Reflecting on her own call to service, Janel recalls the wisdom of her grandmothers. “My Abuela and my Ma taught us that you may feel like you have nothing worth giving, but there is always someone who could use a little help. Jeff and I hope that our daughters will see that everyone has something to contribute and together we can go even further.”

“When we were thinking about how we want to make a difference with our charitable dollars, we knew we didn’t want to forge the path alone. We believe that you may go faster alone, but further together.”

—Jeff and Janel Mirel, Advisors
Mirel Family Fund



The Hortense and Louis Rubin Community Health Fund

Serving People Where They Live

For the past seven years the Rubin Community Health Fund of the Community Foundation for the Greater Capital Region has fostered healthier communities by reducing the incidence and prevalence of chronic kidney disease and related risk factors in the Capital Region.

Spotlight: Capital Roots

Nourishing food is vital to the health and quality of life for a community

Capital Roots' Mobile Markets Program takes a unique approach to implementing holistic strategies to help curb the effects chronic illness (i.e. kidney

disease, diabetes, and hypertension) and limited access to healthy foods have on low-income Capital Region individuals and families.

Having created the country's first Veggie Mobile® produce market, Capital Roots is keenly aware of the challenges low-food access communities face. Each year the Mobile Markets provide more than 50,000 people in Albany, Schenectady, Rensselaer and Southern Saratoga counties with healthy, fresh produce.

Community members served by Capital Roots' food access programs are those with the least power of choice, often being forced to choose between healthy food and other necessities. The Mobile Markets provide opportunities for individuals to purchase top-quality produce at a low-cost, right in their own neighborhoods—leading to positive healthy lifestyle decisions.

By offering our most vulnerable communities access to healthy food with dignity, Capital Roots is leveling the playing field in preventative healthcare. The Rubin Community Health Fund is proud to be a partner as they empower underserved communities.

“Multiyear grantmaking creates an opportunity to develop a collaborative funder-grantee relationship built on trust, transparency and shared knowledge. Support that funders commit up-front for multiple years is key to strengthening nonprofit effectiveness, capacity, and impact by allowing grantees the necessary time to carry out their mission.”

—Bob Audi, Chair
Rubin Community Health Fund
Advisory Committee

Saratoga Senior Center

Collaboration is central to serving the needs of an aging population

A 2021 study by the Center for an Urban Future revealed that Saratoga County had a 50% increase in its senior population from 2011-2021 and found that seniors living in poverty increased 252% during that same period.





\$464,346

In 2024, the Rubin Community Health Fund invested in programs and initiatives that address the health of our community.

Capital District Latinos Cultural Empowerment & Community Engagement Center <i>WellBeing360: Comprehensive Disease Prevention Program</i>	\$40,000
Capital Roots <i>Increasing Healthy Food Access through Mobile Produce Markets</i>	\$45,000
Comfort Food of Washington County, Inc. <i>Enhancing Community Health and Food Security in Southern Adirondacks</i>	\$68,000
Community Caregivers, Inc. <i>Healthy Elders, Healthy Communities and Services for Individuals on Home Dialysis</i>	\$19,096
Connect Center for Youth <i>Connect Pantry</i>	\$15,000
Hudson Headwaters Health Network <i>Food as Medicine - Food Farmacy Program</i>	\$40,000
Radix Ecological Sustainability Center and AVillage, Inc. Collaboration <i>Healthy South End Initiative—Wellbeing through a Holistic Lens</i>	\$60,000
Senior Citizens Center of Saratoga Springs, Inc. <i>Building a Healthier Senior Community</i>	\$25,000
South End Children's Café, Inc. <i>VeggieVenture: A Child-Centered Health and Nutrition Initiative</i>	\$7,600
The Community Builders <i>Health-Full Homes: A Housing-Based Initiative for Stability, Wellness and Food Security</i>	\$40,000
The Food Pantries for the Capital District, Inc. <i>Healthy Pantry Initiative</i>	\$45,000
Trinity Alliance of the Capital Region <i>Wellness Advocates Linking Communities</i>	\$45,000
Watervliet Civic Chest, Inc. <i>Food is Fuel Backpack Project for Students in Need</i>	\$14,650

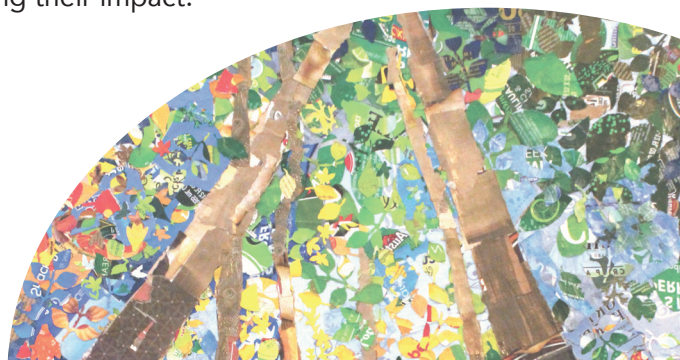
Understanding the needs of the rapidly growing and increasingly vulnerable Saratoga County senior population and stretched to meet the increased demand for senior programs and services, two nonprofits, with distinct expertise, partnered to change the trend.

Saratoga Senior Center, a nonprofit focused on empowering seniors to achieve and maintain personal independence and individual well-being, was feeling the constraints of insufficient space to fully address the increasing need.

Committed to creating a healthy Saratoga County, the Senior Center and Saratoga Regional YMCA joined forces, constructing a new facility

attached to the state-of-the-art YMCA, more than doubling the square footage of the Senior Center. In 2023 the new Saratoga Senior Center was able to serve 3,400 seniors; a 38% increase over 2022.

The Rubin Advisory Committee recognizes the importance of these programs in serving the aging population and is pleased to provide multi-year support to the Saratoga Senior Center to assist them in achieving their mission and maximizing their impact.



Community Initiatives

Achieving more good starts with collaboration

As part of our mission, the Community Foundation for the Greater Capital Region is committed to addressing community needs by uniting charitable donors, nonprofit partners, and resources to foster positive and lasting change. We recognize that collaboration is the key to achieving more good—no one person or organization can do it alone. Through thoughtful partnerships, strategic grantmaking, and community-focused initiatives, we help nonprofits expand their impact and help donors achieve their charitable goals.

Our work is guided by a vision of collective impact, bringing people together to create stronger and healthier communities. Below, we highlight some of the community initiatives supported by our staff and leadership, designed to amplify the good we can accomplish when we work together.

Strengthening Capital Region Nonprofits

At the heart of our work is the recognition that strong nonprofits make strong communities. We are committed to strengthening nonprofits by providing essential capacity building support to ensure that local organizations have the resources, leadership, and operational strength needed to deliver on their missions. The Foundation works side-by-side with nonprofits to help them build resilience, better meet community needs, and do more good—even with limited resources.

- Virtual Workshop Series**
 As part of our effort to build a stronger nonprofit sector, our Virtual Workshop Series provides free monthly educational sessions on key areas of nonprofit management. In collaboration with local partners, these workshops cover critical topics like Board Governance, Strategic Planning, Fundraising, and Building Inclusive Services. This series not only strengthens individual organizations but also encourages cross-sector learning, enabling nonprofits to work with other leaders to better serve their communities.
- Technical Assistance**
 To help nonprofits overcome challenges and adapt to an evolving environment, our Technical Assistance program offers deep-dive workshops and personalized support. These sessions provide practical, actionable solutions for organizational growth, empowering leaders to take confident steps forward. By offering hands-on guidance and informal consultations, we help nonprofits navigate change, clarify priorities, and unlock new opportunities for collaboration.

“Working with the Community Foundation has been transformative. It’s not just about programs and grants; it’s about growth. They’ve helped me understand diverse communication styles, refine my own, and encouraged introspection. As a result, I’ve become a better leader—one conversation at a time. Thank you, Community Foundation, for amplifying impact and inspiring growth!”

—Stephanie Romeo, Associate Executive Director, Shelters of Saratoga

Supporting Community Initiatives

We believe in the power of community-driven change. The Community Foundation partners with local efforts to address some of the region’s most pressing challenges. Whether through grantmaking, technical support, or convening stakeholders, we are committed to amplifying the collective impact of

these initiatives. Current projects include:

- Saratoga Communities of Excellence:** Collaborating to improve the well-being of Saratoga County residents.
- Clean Energy Hub:** Helping connect residents to clean energy opportunities in the Capital Region.
- Capital Region Indicators:** A joint initiative providing data and visualizations to inform critical community decisions. <https://www.capitalregionindicators.org/>
- Black Chamber of Commerce - ATEAM:** Supporting small businesses with mentorship and education to foster economic advancement. <https://albanyblackchamber.org/>
- The Innovation Collaborative:** An accelerator, created by Captain Community Human Services, aimed at building nonprofit capacity through innovation and collaboration.

“We are grateful for the continuous support of the Community Foundation. They reach beyond supporting community service needs through impactful grants by also serving as intuitive partners in strengthening community human service efforts.”

—Kathy McNeice
 Captain Community Human Services



Community Convening and Engagement

The Community Foundation is uniquely positioned to facilitate collaboration. We bring together a broad range of stakeholders—from philanthropists and activists to elected officials and business leaders—to contribute financial resources and innovative ideas to benefit those living and working in the 518, now and in the future.

- In January 2024, the Community Foundation co-sponsored a special screening of the movie *UnCharitable*. Inspired by Dan Pallotta, whose record-breaking TED Talk has inspired leading philanthropists and changemakers, *UnCharitable* is a feature-length documentary that introduces a radical new way of giving.
- Capital Region Funders Convening** – Each quarter, the Foundation convenes area funders to learn together and share opportunities for co-funding and collaboration.



Nonprofit Training and Advancement Fund

The Nonprofit Training and Advancement Fund was established in 2021 with the goal of providing one-time training grants for local, small nonprofits to support leadership development, succession planning, performance management and frontline staff training. **Since inception, the fund has distributed 115 grants totaling \$91,339.**

Make More Good Possible Campaign

For more than 100 years, community foundations have been making a positive difference in cities across the US, yet most Americans don't understand what community foundations do, what they stand for or how to get involved.

This year our Foundation joined the *Make More Possible* campaign – a public awareness initiative to highlight our unique value. The campaign—developed by the Community Foundation Awareness Initiative in partnership with the communications teams at over 40 partner community foundations—is a national branding

effort that can be localized and co-branded by community foundations that are licensed to participate. We hope that you enjoy seeing our ads where you get your news and entertainment.

The Community Foundation Invests in Infrastructure

Over the last 18 months, Community Foundation staff embarked on a complete database conversion, followed by implementation of an enhanced grant and scholarship applicant portal.

By upgrading our information and grants management systems, the Foundation is better able to support our current and future fund advisors, leverage data to advance equitable philanthropy and create strategies for simplifying and automating grant/scholarship applications, improving functionality and reducing grantee and student burdens, as well as relationship tracking and data practices to enhance transparency and accountability.

Raise The Region

Highlighting examples of philanthropy and generosity

Each year, the Community Foundation for the Greater Capital Region is honored to celebrate generosity in our hometown. Raise the Region is an opportunity to honor people who give of their time, talent and treasure to support the place we call home. It is a time to gather with friends and recommit to those things we know make a difference in people's lives.

C. Jordan Vail Spirit of Philanthropy Award

Recognizing individuals and families who demonstrate outstanding leadership and extraordinary commitment to preserving and enhancing the quality of life in our region.

The Picotte Family

The breadth and depth of support from the Picotte Family for our Region's nonprofits is inspiring and a model for other families who care. The Picotte Family's ability to mirror their corporate and entrepreneurial spirit in their personal philanthropy is exemplified in the many ways they fund new initiatives and support projects they believe build a brighter future for everyone. Today, three generations work shoulder to shoulder – sharing values and ideas to invest in innovative programs that enhance the

arts, support education, provide access to healthcare, and enrich the lives of both young and old across the Capital Region.

In his remarks, John Picotte highlighted the many ways the Community Foundation has helped to guide and support their local giving.

Beacon of Light Award

Recognizing individuals who have dedicated their lives to shining a light for others and working to open access and create opportunities for everyone to thrive and succeed.

Dr. Bob Paeglow

Dr. Bob Paeglow, founder of Koinonia Primary Care, Inc., has dedicated his life to serving his community and to breaking down barriers to ensure health equity in the City of Albany. As a faith-based ministry, Koinonia is recognized for its innovation: integrating primary care and mental health care with spiritual wellbeing; offering hope, love, and kindness to those in their care.

"I am proud, today, to be in the presence of so many people who share the conviction to make this world a better place for others with me. Thank you!"

—Dr. Bob Paeglow

2024 Recipient, Beacon of Light

making more good possible

through the power of collective giving.



[Learn more.](#)



Nonprofit Training and Capacity Building

Leaders Maggie Hall, Hope 7; Ben Willams, Connect Center for Youth and Sabrina Houser, Capital CFO+ share their experiences to help strengthen nonprofits.



Catalysts for Change Leadership Program

The Catalysts for Change Leadership Program, inspired by the Gifford Foundation’s *Nourishing Tomorrow’s Leaders*, seeks to foster diverse and inclusive leadership across nonprofit boards in the Capital Region. In a spirit of collaborative growth, this 10-week series empowers participants with the knowledge, skills, and connections needed to serve on nonprofit boards, helping to build boards that better represent and serve their communities. Graduates of the program become part of a dynamic network committed to celebrating diversity and creating lasting change across the region.



Crickett Thomas-O'Dell, Shatoya D. Michel, and Salah Harris

Crickett: *“The Catalysts for Change Leadership program is a highly influential, confidence-building and transformative program that provides the participants with practical sessions that will give them the skills needed to become the change-makers on our nonprofit boards, to be a small part of this proactive professional development is quite rewarding.”*

—Crickett Thomas-O'Dell
Director, Statewide Pre-Apprentice Program Workforce Development Institute (WDI), NYS Building & Construction Trades Council

Shatoya: *“One of the best decisions I made in 2023 was applying to the Catalysts for Change Leadership Program. I met Daquetta Jones at an Albany Business Review mentoring night, and it was her influence that inspired me to apply. Catalysts gave me the tools to be an effective board leader while also helping me realize my potential to create impact in the very community I grew up in.*

Now, stepping into the role of program leader is both humbling and fulfilling. I believe deeply in Catalysts’ mission to create space for voices that have long been overlooked. Being trusted to guide this year’s participants as they walk their own journeys fills me with excitement and hope. I want them to leave this experience knowing their potential—and prepared to bring meaningful change to their communities. The program transformed me, and I know it will do the same for them.”

—Shatoya D. Michel, Co-Leader, Catalysts for Change; Associate Director/Lecturer Archer Center for Student Leadership Development, RPI

Salah: *“In 2022 I applied to be a part of the Catalysts for Change program and was rejected. The truth is, I wasn’t ready. I had a whole lot of growing to do. Fast forward to 2023. I now proudly wear the badge of a Catalysts, not just stirring the pot – now causing chain reactions. The 10-week program was a journey of self-discovery and forming bonds with a squad of brilliant minds. You must know yourself and value what you bring to the table before you go running to fill spaces based on who—but not what—you are.”*

—Salah Harris, 2023 Alumni, Catalysts for Change; Founder & Executive Director, Career InTouch



2024 Catalysts

Left to right - Top to bottom row

Row 1: Tahirih Anthony; Brian Rodriguez; Ehssuyi Gomes; Emily Welsh

Row 2: Laquetta Alexander; Odaysia Burton-Garland, RN, BSN/MS(IP); Galen Gomes Sr., Ed.D; Ocesa Keaton, LMSW

Row 3: Sam Wise, SHRM-CP; Ezra Scott Jr. MBA, M.Ed; Nishaeta Richardson; Elizabeth Wales, MS, APR

Row 4: Guerina Felch, PMP, MBA; Dustin Dolloway; Sonia Morrenda, MBA; Kate Wood, MSW

\$1.6 Million Granted

●●● through Philanthropic Partnerships

Bender Family Foundation	\$163,000
B'nai B'rith Gideon Foundation	\$400,000
McCarthy Charities	\$523,000
John D. Picotte Family Foundation	\$255,000
Review Foundation	\$272,500

Our partnerships with private foundations make more...good possible

For more than two decades, the Community Foundation has worked with private and family foundations to provide administrative support, technical expertise, and deep knowledge of the local community to maximize philanthropic impact. "Our partnerships with private and family foundations have amplified the impact of our collective grantmaking," shared Shelly Connolly. "Together, we are meeting immediate needs while fostering a shared learning community with the common goal of empowering the nonprofits that uplift our region."

The McCarthy Charities

Deeply rooted in our community, the McCarthy Charities remains dedicated to improving the quality of life in Rensselaer County. The family has provided support for over 100 years, and the Community Foundation has had the distinct pleasure of working with the McCarthy family since 2015 to support their philanthropic efforts. Since that time, the Community Foundation is proud to have played a role in facilitating more than \$3.5 million in grants to support nonprofits across Rensselaer County.

"The Community Foundation's expert guidance has streamlined our processes, allowing us to focus on what truly matters: making a positive impact on the quality of life in Rensselaer County. Their in-depth understanding of local needs has been invaluable, ensuring that our grants are aligned with the most pressing issues and that all material is prepared and ready well in advance of the annual and semi-annual meetings."

—Brenden McCarthy, Vice President, The McCarthy Charities

Caffe Lena Endowment Fund

Preserving a legacy of music, connection and learning

Opened in 1960, Caffè Lena continues to present extraordinary music in a setting steeped in history and widely recognized as the longest, continuously operating folk music venue in the United States.

The Library of Congress calls Caffè Lena "an American treasure," and it has been credited for many contributions to the development of American music and for helping to launch many of the best loved songwriters.

With an eye toward the future of this remarkable venue, the Caffè's leadership created the Caffè Lena Endowment Fund at the Community Foundation in 2021.

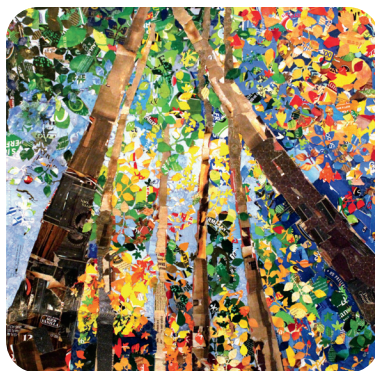
The Caffè's Endowment Fund was established to ensure that Lena's founding vision of simplicity, kindness to strangers, and art above profit are protected for future generations to experience through music.

"CAFFÈ LENA SERVES AS A BRIDGE BETWEEN THE GENERATIONS."

—ARLO GUTHRIE



PRESORTED
FIRST-CLASS MAIL
U.S. POSTAGE
PAID
VILLANTI
MAILED FROM 05401



Ways You Can Help Make More Possible

Donate

directly or through your donor-advised fund
to any of the nonprofits found in this report,
or to others like them.

Give

to the Community Impact Fund
to support the changing needs of our community.

Leave a Legacy

Create a fund that will live and give in perpetuity, supporting the causes
and issues most important to you. Contact the Foundation
to learn more: 518-446-9638 or mderosia@cfgcr.org.



Two Tower Place | Albany, NY 12203 | p: (518) 446-9638 | www.cfgcr.org

