

The Community Foundation for the  
Greater Capital Region

# SOARING TO NEW HEIGHTS

---



---

2021-2022 Annual Report to Our Community



# Table of Contents

*Freedom* by Denelle Abel ..... 2

Message to Our Friends..... 3

Soaring to New Heights..... 4

Diversity, Equity and Inclusion ..... 6

Catalysts for Change ..... 8

Khadijah Peak—Advantage 15-Love ..... 9

Community Impact Funds..... 10

Investing in the Health of Our Community

    Rubin.....12

    Cogswell.....15

    Roach .....15

Board and Staff .....16

Initiatives Create Opportunity.....18

Giving Us Wings

    Scholarships..... 20

    A.C. Riley..... 22

    Neil Golub..... 24

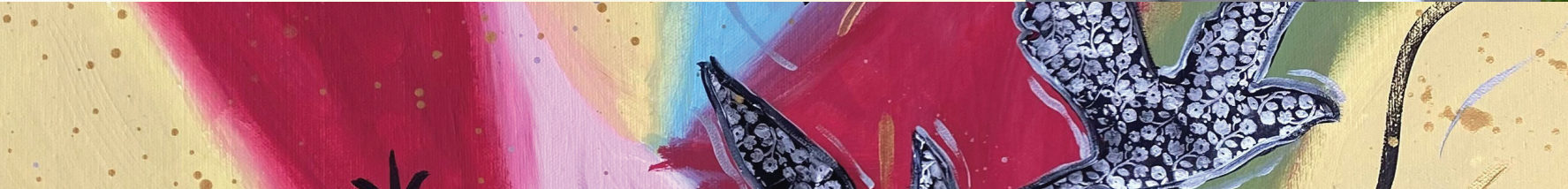
    Chuck Liddle ..... 26

Financials..... 28

Partnerships Amplify Impact..... 30

Our New Funds.....31

Photo credits: Jayana LaFontaine, pages 2, 8, 16-17, 20-21



Cover: **Freedom** by Denelle Abel

“Dedicated to every person who continues to lean on their core values, represented in the colors in the background, to overcome their difficulties.” Ms. Abel is a contemporary artist who pulls from her experiences as a mental health counselor, cosmetologist, and Caribbean—American woman. “*Freedom* was inspired by the various aspects of our personalities and those experiences that make us resilient. When we meditate and process through the difficult experiences that hold us back or cage us in, we build strength to break free and soar.”

Dear Friends:

We are a community of listeners, learners, teachers, and givers—sharing a common goal to steward and strengthen our region.

***Soaring to New Heights*** will require us to open our hearts, convene leaders with diverse backgrounds and perspectives, build on our shared strengths, and spark innovative ways to build up our community.

Today, nearly 500 individuals and families are partnering with the Foundation to amplify their impact—investing more than **\$100M** in our region’s nonprofits and scholars since our founding in 1968.

It is our privilege to work in partnership with our family of fund-holders to invest in inclusive strategies that deepen our connection to the community and together help us address the issues facing our friends and neighbors.

To support these efforts, we remain committed to building a responsive and sustainable community endowment, prepared to tackle the challenges of today and tomorrow.

**We pledge to continue to listen, learn, and support our community.**

***Together, we soar.***

Alicia Lasch  
Chair, Board of Directors

John Eberle  
President & CEO

In 2021  
the Foundation  
Surpassed  
**\$100**  
Million  
in grants  
to support nonprofits  
and scholarships to students  
across our region

# Soaring to New Heights

**The Community Foundation believes we are stronger together.**

And it is evident that you believe this too. You have trusted the Foundation to steward your charitable investments and honor your giving legacy.

Your support of the **Campaign for Impact**, your commitment to help us build lasting charitable funds, and your willingness to partner with the Foundation to convene diverse voices and ideas has led to projects and initiatives that continue to benefit our region today.

Together we are a resource for our neighbors and nonprofits and an incubator for innovative ideas that promise positive systemic change.

**This is demonstrated in our role as a:**

## **Fiduciary**

The Foundation's long-term approach to our portfolio has yielded a return that has provided more than **\$114 million** of investment in our nonprofits and in support of young scholars. Endowed funds provide a reliable and sustainable resource for our community. See p. 28-29 for the impact of our financial standing.

## **Grantmaker**

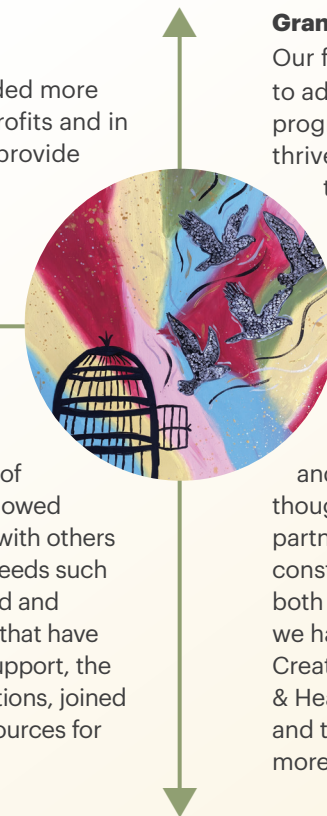
Our funds are responsive and have been directed to address urgent community needs, to support programs and initiatives which help our neighbors thrive and have provided a springboard for students to access college and professional certificate programs. See p. 10-11, 20-21 for a look at our Community Impact grants and scholarship profiles.

## **Convener**

The Foundation has served our community together many times over our 54-year history. We have seen the best of humankind in times of crisis like COVID-19 or the devastation that followed Hurricane Irene. Together we have partnered with others to offer solutions around critical community needs such as homelessness and healthcare. We are proud and grateful for the support of our family of funds that have stood united and at the forefront. With your support, the Foundation has led vital community conversations, joined diverse partners, and pooled our financial resources for the collective good.

## **Strategist**

Our role as grantmaker and convener provides a unique lens to view our community and our future. The Foundation's ability to gather thought leaders, community stakeholders and funding partners around community needs provides a construct for innovative idea sharing and mutual trust, both imperative to any successful strategy. Together we have addressed support for the Alliance for the Creative Economy (ACE), Catalysts for Change, Green & Healthy Homes®, the Capital Region Indicators project and the launch of the Emerging Nonprofit Leaders. Read more about current strategic initiatives on p. 8-9, 18-19.



**We have done it before...we can do it again.**

**TOGETHER we will SOAR!**



# Diversity, Equity and Inclusion

**Reframing leadership to emphasize creativity and a voice for shared solutions and community building**

**T**he lack of diversity on boards and in leadership structures limits voice, creativity, shared solutions, and community-building across our region. The status quo keeps people separated and diminishes economic development and the overall health and well-being for all of us who call the Capital Region home.

Diversity, Equity, and Inclusion are about growing a community where everyone feels safe, welcomed, appreciated, and has a voice in making decisions about all matters that impact their lives. It requires going the extra mile and tapping into everyone's knowledge and creativity as we build a culture of innovation and opportunity that benefits us all.

"If we get this right, we will be a *Greater Capital Region*. This is about caring for people and communities that have suffered incalculable injustice," reminded John Eberle. In response, the Foundation's board and staff followed by taking a closer look at our own policies to ensure that our commitment to Diversity, Equity, and Inclusion are articulated in our mission and that we remain intentional to these core values in our every decision, action and facet of our work.

**"Let's be purposeful. Let's work together to challenge the status quo, fix broken and unjust systems and make real change."  
—John Eberle, President & CEO**

The Foundation stands unified. Our commitment starts with our people and our culture. We commit to reaching out to promote the empowerment of community members and grantees through inclusive grantmaking practices, shared information, and collaborative community leadership to build a more just and equitable region.

The Community Foundation affirmed our commitment to Diversity, Equity, and Inclusion with a promise to ourselves and our community. We are grateful for support from the Foundation's Board and staff in forming *Our Promise*.

Special thanks to:  
**David Craft, Esq.**  
**Belinda Hilton**  
**Heidi Knoblauch, Ph.D.**  
**Fran'Cee Brown-McClure, Ph.D.**  
**Meaghan Murphy, Esq.**  
**Mindy Derosia, VP, Development**  
**Daquetta Jones, Director, Equity & Inclusion Initiatives**  
**John Eberle, President & CEO**

## Our Community Foundation Our Promise

**We acknowledge the historical systems of oppression that created inequities and disparities in the distribution of wealth and opportunity in marginalized communities.**

**We believe equity and inclusion flourish in a safe and welcoming environment where people are valued and treated with dignity and respect.**

**We build relationships that broaden our reach and help us create an organization that reflects the diversity and vitality of our community.**

**We promise to provide open access to information, opportunities for collaboration and funding to address the complex issues facing our region.**



# Catalysts for Change

**Building a culture that reflects those we serve takes time and requires steps that are strategic and thoughtful.**

**A**dvancing diversity on nonprofit boards continues to be a critical shared goal – we know our organizations will be stronger, as will the solutions to complex issues, when our voices represent our entire community.

Preparing boards and the diverse leaders ready to give their time and energy to the causes most important to them requires a careful review of an organization’s policies and procedures, thoughtful training and talent development and a recognition of our individual weaknesses and areas for growth. Together we must break down the inherent obstacles if we truly want our new leaders to prosper.

To address these challenges, the Community Foundation partnered with knowledgeable thought leaders to launch two new programs in 2021: *Catalysts for Change* Leadership Program and Nonprofit Board Inclusion Training Series.

We were excited to work alongside many committed board members in their learning—and to see how the program could work when both the nonprofit and

emerging leader are sharing the equity journey.

“There is no doubt that our participation in the Community Foundation’s programs has helped shape how we are reimagining our board at this time,” said Amber Marino, 15-LOVE’s Executive Director. Amber continued, “for our board to want to grow and improve shows their commitment to our mission, and ensures that our organization is strong and able to handle whatever might come along in the future.”

Margaret Malicki, President of the 15-Love Board of Directors, participated in the Nonprofit Board Inclusion Series. “I needed to deepen my understanding of the topic and, in doing so, be better positioned to support our nonprofit community in their journey,” Margaret shared. Following the series, Margaret led the 15-Love Board through a review of its bylaws and reflected on the insights current board members who were program participants added to the organization. The series reassured everyone that they were heading in the right direction and helped to keep their equity integration moving forward.

**“The Community Foundation’s programming has strengthened our resolve and is providing the tools we will need to succeed.”**  
—Amber Marino, Executive Director, 15-Love.



Khadijah Peak, 2021 Catalyst Alumna

## Khadijah Peak

# Advantage 15-Love

**“I like to think of myself as a problem solver, so I am always working on these skills and developing ways that I can be a better team player.”**

**Equity has been a part of 15-LOVE’s identity** and mission since day one. The terminology may have changed over the years, but their commitment has never wavered. Over the past few years, the 15-Love Board of Directors underwent several milestone changes, including a board president transition, creation of an alumni committee of the board, an update to the organization’s Diversity & Inclusion Statement, and recently writing an anti-racist statement.

When Khadijah Peak learned of the *Catalysts for Change* Leadership Program, she was excited to complete her application for the program. Khadijah had recently joined the 15-LOVE Board and had the support of both Executive Director Amber Marino and new Board President Margaret Malicki. They saw her strengths, believed in her, and knew that she would benefit from being a part of learning beside other bright, diverse leaders to hone her natural talents and build a strong foundation for board service.

Reflecting on the program, Khadijah remembers one of her biggest takeaways was during the Collaboration & Conflict Resolution training with Lakia Green and Gregory Kwaczala. “One of the lessons that really stuck was the different approaches to conflict. Not everyone will be receptive to how you may go about solving a problem, so the program shared tools to work through a conflict. I like to think of myself as a problem solver, so I am always working these skills and developing ways that I can be a better team player.”

After completing the program, Khadijah was excited to bring back several ideas, including promoting a balance between leading and participating as well as being open to change and growth. “Khadijah will lead our Alumni committee and work with our PR committee, so her participation in the *Catalysts for Change* program has provided her with invaluable training to take on her new roles,” Amber said. “I’ve known Khadijah since she was the ‘younger sister’ in our program. I have seen her grow and flourish, and I’m so excited to have her with us.”



# Community Foundation Awards

\$273,370

## Community Impact Grants 2022

Addressing the complex issues facing our region requires discretionary funding. The Community Foundation’s Impact Funds fuel responsive grantmaking in support of innovative solutions led by our nonprofit partners.

The Foundation utilizes the expertise of its staff and Board of Directors to make grants that will address issues matching donors’ passions. This year’s grants supported a wide range of issue areas, from organizations serving individuals with physical and mental disabilities to initiatives addressing hunger and education to organizations serving individuals struggling with homelessness.

The growth of our Community Impact Funds are a result of the generosity of individuals and families who have affirmed their values by creating legacy funds to forever

support the changing needs of our community. Realizing the need for more discretionary funding, the Community Foundation launched the *Campaign for Impact* in 2018 and set an aspirational goal of building our discretionary funds by \$3 million.

The Foundation surpassed its goal in early 2022. We are grateful knowing the *Campaign for Impact* helped to grow these discretionary endowed funds by more than \$4.9 million, ensuring they will forever fuel initiatives to support our neighbors and the place we call home.

Our Community Impact Funds are a group of funds that individuals and families have established as either:

**Discretionary funds**

These allow the Foundation the flexibility to use its extensive knowledge of community issues to make grants that address emerging issues;

**Field-of-Interest funds**

These provide the Foundation grantmaking discretion within a determined area of interest.

The list below reflects the Community Foundation’s 2022 Community Impact grants—the largest discretionary grant round in our history.

A Dapple A Day Equine Center	\$10,000
AIM Services, Inc.	\$10,000
Beyond My Battle, Inc.	\$4,955
Bluelight Development Group, Inc.	\$10,000
Bring On the Spectrum, Inc.	\$12,500
Catholic Charities Housing Office	\$6,000
Center for Law & Justice, Inc.	\$9,000
Creative Living Solutions, Inc.	\$1,000
Empire State Youth Orchestra	\$5,784
Equinox, Inc.	\$10,000
Franklin Community Center	\$2,500
Future of Small Cities, Inc.	\$10,000
Interfaith Partnership for the Homeless	\$12,000
NYS Network for Youth Success, Inc.	\$10,990
Pitney Meadows Community Farm, Inc.	\$5,816
Reach Out and Read, Inc.	\$7,500
Rensselaer Plateau Alliance	\$15,000
Saratoga Regional YMCA	\$15,000
Schenectady Community Action Program	\$8,000
Schoharie River Center, Inc.	\$7,500
Senior Hope Counseling, Inc.	\$9,000
Sky High Adventure Center, Inc.	\$10,000
St. Anne Institute	\$5,000
Sunnyview Hospital & Rehabilitation Center	\$13,000
Trinity Lutheran Church	\$5,000
Unity House of Troy, Inc.	\$7,770
Upper Hudson Planned Parenthood	\$12,553
Walter Elwood Museum, Mohawk Valley	\$10,000
Warriors on Wheels, Inc.	\$5,000
Where Angels Play Foundation	\$10,000
WMHT Educational Telecommunications, Inc.	\$7,550
YWCA of Schenectady	\$5,000





# The Hortense and Louis Rubin Community Health Fund

2018-2022  
52 Grants =  
\$2.1  
Million

Invested in the Health of Our Region

**The Rubin Community Health Fund**  
prioritizes support for programs that address the prevention,  
management, and treatment of kidney disease  
and related health issues.

**T**he Hortense and Louis Rubin Community Health Fund was created in 2016 with initial proceeds from the operation and sale of the Rubin Dialysis Centers. Each year following, the Foundation received an additional gift, adding to the corpus of the endowed fund. In 2021, the Community Foundation received the final distribution of assets from the sale, making the Rubin Community Health Fund the largest fund managed by the Community Foundation and supported by an active advisory committee of health care experts.

The Rubin Community Health Fund prioritizes support for programs that address the prevention, management, and

treatment of kidney disease and related health issues. The identified priorities focus grantmaking around building communities with reduced incidence and prevalence of chronic kidney disease (CKD) and related risk factors, and to invest in innovative initiatives to change the way our region addresses systemic health disparities.

The Rubin Advisory Committee uses data and community analytics to evaluate our region’s needs. Research and community knowledge support the Fund’s grantmaking commitment to engage health care stakeholders around strategies to change both systems and the delivery of care to better meet the needs of our neighbors.



Rubin Committee Members gathered with Camille Emeagwali to create a strategic framework and articulate funding goals.

### Understanding Community Needs

The Community Foundation applauds the work of the Rubin Advisory Committee to develop funding priorities, create impact measurements and support critical healthcare initiatives. We are grateful for their continued dedication and commitment to honor the legacy of the Rubin family and the mission of care upheld by the Rubin Dialysis Centers.

The Rubin Community Health Fund is especially grateful to William “Bill” Koester for his commitment. Bill has served as a thoughtful and inclusive guide. As Chair, Bill helped to create an advisory committee with healthcare expertise—well-rounded in kidney disease and public healthcare delivery. Bill concluded his term as Chair earlier this year.

### 2022-2023 Advisory Committee

Robert Audi\*, Chair  
Hon. Dorcey Applyrs\*, DrPH, MPH  
Emily Briskman  
Wayne Evancoe  
David Kadish  
Molly Klapp, MS, RD, CDN, CDCES  
William (Bill) Koester  
Hyacinth Mason, PhD, MPH, CHES  
John Rodat\*

**Staff and Program Support**  
John Eberle, President & CEO  
Shelly Connolly, VP, Community Grantmaking  
Melisa Logan, Program Associate  
Dylan Hall, Director, Strategic Initiatives

*\* indicates member of the Community Foundation Board of Directors*

**“Giving is a way to build a community that is healthy and equitable. My commitment to public service, public health and my work with the Community Foundation provides exposure to organizations that are aligned with my values.”**

**— Hon. Dorcey Applyrs, DrPh, MPH, CFGCR Board of Directors**





# Funds Created to Forever Invest in the Health of Our Community

2022 Rubin Fund Grants = **\$466,460**

**Boys & Girls Club of Schenectady** **\$25,000**

Grant supports programming to address obesity and provides a holistic approach to helping young people.

**Capital District Latinos Cultural Empowerment & Community Engagement Center** **\$30,000**

The “Chronic Disease Prevention Project” will focus on reaching Capital District residents of color—particularly Latinos—to prevent serious chronic diseases such as diabetes, hypertension, and heart and kidney disease that disproportionately affect people of color.

**Capital Roots** **\$38,000**

Capital Roots will increase capacity for its Mobile Markets program with additional staffing and new, multilingual signage and materials.

**Comfort Food of Washington County** **\$65,460**

Comfort Food of Washington County will continue to ensure community access to preventative services to reduce hospitalizations, emergency room visits and adverse health outcomes.

**Community Caregivers, Inc.** **\$18,000**

Community Caregivers, Inc. will provide more seniors and adults with: access to healthy food by delivering groceries and/or free food from a food pantry, prescriptions, rides to dialysis and other medical appointments and support.

**Food Pantries of the Capital District, Inc.** **\$50,000**

The “Food as Medicine” program focuses on medically tailored prepared meals (daily) and a weekly, medically tailored grocery supplement.

**Northeast Kidney Foundation** **\$35,000**

This program provides emergency funding to dialysis and kidney transplant patients to participate in “Take

Charge,” a free 8-week workshop for participants with chronic kidney disease who want to learn how to manage their illness and live healthier.

**Radix Ecological Sustainability Center and AVillage, Inc.** **\$60,000**

The “Healthy South End Initiative” is a collaborative project between Radix and AVillage, which focuses on preventive services to ensure better health in Albany’s South End community and the surrounding neighborhoods.

**Schenectady Community Ministries** **\$50,000**

Grant supports the implementation of a system for Schenectady County residents to have access to tailored groceries and educational courses to address chronic kidney disease, diabetes, and related comorbidities.

**Senior Citizens Center of Saratoga Springs, Inc.** **\$30,000**

Program supports seniors’ healthy habits which include healthy food, physical activity, outreach, senior support services, transportation and health literacy.

**Trinity Alliance of the Capital Region** **\$55,000**

“Wellness Advocates Linking Communities” is a team of community health workers dedicated to improving overall health of the community by identifying individuals who may be considered ‘hard to reach’ and re-engaging them in preventive health and wellness services.

**Wildwood Foundation, Inc.** **\$10,000**

Support will train Wildwood staff on the prevention and detection of chronic kidney disease and will implement “My25,” a nutritional monitoring program.

## Arnold Cogswell Health Care Fund

When the Albany Hospital for Incurables closed its doors in the early 1990s, proceeds from the sale were earmarked for charity. Arnold Cogswell, a well-known community leader, had held leadership positions at Albany Medical Center and Albany’s Hospital for Incurables in addition to his tenure on the Community Foundation’s Board of Directors. He knew the strengths of each of the organizations and had confidence that the Community Foundation would be a good steward and preserve the legacy of care he had witnessed at the Hospital for Incurables.

After guiding the **Community Health Care Fund/Albany Hospital for Incurables** to the Community Foundation, Mr. Cogswell went to work recruiting other community leaders to serve on the grants committee. The committee, comprised of Susan Dake, William Cromie, MD, and Thomas Older, MD and eventually led by Herb Shultz, remained unified in mission and steadfast in their commitment to serve impactful community led organizations and to keep a keen eye on stewarding the funds to ensure growth and impact.

In 2008, the grants committee chose to honor Mr. Cogswell and his lifelong commitment to healthcare and community by renaming the fund in his honor. Always visionary, the grants committee moved to endow the Arnold Cogswell Fund in 2022 ensuring that the fund will continue to meet the changing needs of our community.



## Arnold Cogswell Health Care Fund

Established in 1995

31 gifts = \$3M

291 grants investing \$4.8M

\$2.2M endowed in 2022 to forever support our region’s health

## John Faunce and Alicia Tracy Roach Fund

**The John Faunce and Alicia Tracy Roach Fund**, created with a gift from the estate of John and Alicia Roach, was the preface to a love story that will continue to be told through the impact of their thoughtful generosity.

Following the gift from their estate, the Foundation was fortunate to have the opportunity to work with John and Alicia’s son and daughter-in-law to begin their next chapter. It was important to John and Elizabeth Karl-Roach to capture their parents’ dedication to service, a life pursuit that was demonstrated in both their professional and personal passions.

Like his parents, John and his wife Elizabeth were grateful for all they achieved, and they understood that for many, leading a healthy and productive life was difficult.

It was through their love of family and community that John and Liz chose to inscribe their family values in the grant guidelines of the John Faunce and Alicia Tracy Roach Fund. Together they were able to honor Dr. Roach’s work in the field of kidney research and follow their passion by supporting individuals and families in need.



## John Faunce and Alicia Tracy Roach Fund

Established in 2009

Estate Gifts = \$1.6M

43 grants investing \$759K

Today—\$2.08M Endowed

Top right: Cogswell 2022 Grant Presentation to: Albany Medical Center Foundation, St. Peter’s Hospital Foundation, Wildwood Foundation, and Koinonia Primary Care.  
Bottom right: The Roach family.



# Board and Staff

Alicia Lasch, Chair

Mark Eagan, Immediate Past Chair

Robert Reynolds, Esq., Vice Chair

Robert Hennes, Treasurer

Belinda Hilton, Secretary

Christopher Cimijotti, CPA, Chair, Audit Committee

David Craft, Esq., Chair, Scholarships Committee

Murray C. Massry, Chair, Grants and Initiatives Committee

Frank Slingerland, Chair, Governance Committee

Hon. Dorcey Appllys, DrPh, MPH

Robert Audi, CPA

Jean Bedell, CPA/PFS, CFP

M. Christian Bender

Aimee Dake

Eldon Harris, CRPC, CPWA

Heidi Knoblauch, Ph.D.

Eileen McLoughlin

Meaghan E. Murphy, Esq.

Chet Opalka

John W. Rodat

Jan Smith

Walter Thorne



## Emeritus Directors

From left to right

- Phoebe Powell Bender
- Marvin A. Freedman
- Barabara Linell Glaser, Ed.D.
- Barbara K. Hoehn
- Paul Hohenberg
- A.C. Riley
- Ellen Sax



“On behalf of the board, thank you to our Emeriti members who led the organization with integrity. We are grateful for your continued support and trust.”—Alicia Lasch

“Ralph Waldo Emerson defined “success” as leaving the world a bit better, and that is my hope in working with the Community Foundation.”—Robert Reynolds

“I am inspired by the dedicated staff, a shared passion to effect positive change, a drive to understand community needs and the ability to lead through collaborations that keeps me anchored to the Community Foundation.”—Ellen Sax

## Geographic Fund Liaisons

- Jessica Brand, Esq., Bethlehem Central Community Foundation
- Frederick Wetzel, DDS Niskayuna Community Foundation

“The Foundation helps us have a broader reach and greater impact with our giving.”  
—Chet Opalka

“My life has been blessed because people gave, put in time, and poured into my life. I hope to make the same impact in someone else’s life.”—Belinda Hilton



## Staff

From left to right

- Melisa Logan, Program Associate
- John Eberle, President & CEO
- Mindy Derosia, VP, Development
- Dylan Hall, Director, Strategic Initiatives
- Maryika Stubbs, Scholarships & Advancement Associate
- Jenna Cuilla, Director, Advancement Operations & Communications
- Liza Kerwin, Finance & Administration Associate
- Terry Mariano, Chief Financial Officer
- Shelly Connolly, VP, Community Grantmaking
- Daquetta Jones, Director, Equity & Inclusion Initiatives



# Foundation’s Initiatives

## Create Opportunity for Action

“At the heart of the Community Foundation’s work is our service to the region’s nonprofits—the boots on the ground working tirelessly to ensure that everyone has the opportunity to succeed and thrive.”—John Eberle, President & CEO

### Inclusion, Diversity, Equity and Action (IDEA)

In August 2020, the Foundation convened the **Capital Region IDEA Collaborative**—a steering committee comprised of diverse community experts looking to tackle the issue of diversity on nonprofit boards. The committee continues to advise the Community Foundation on new initiatives and serves as ambassadors for change in our community.

As a result, the Community Foundation launched two programs.

- **The Catalysts for Change Leadership Program (CFCLP):** Based on Nourishing Tomorrow’s Leaders of The Gifford Foundation, this expansive board development series focuses on increasing inclusiveness and diversity on nonprofit boards. Upon completion of the program, participants have the opportunity to connect with nonprofits and join a network of leaders looking to change the state of diversity on nonprofit boards. Our second cohort launched in September 2022!
- **Nonprofit Board Inclusion Series**— Launched in 2021, this series of training programs for current nonprofit leaders was co-created with Angela Dixon, Senior Vice President/Chief Diversity Officer at Berkshire Bank. The series focused on ways to create welcoming board cultures representative of diverse, traditionally underrepresented communities. The goals were to raise awareness and knowledge of the value of diversity, equity, and inclusion for nonprofits,

build inclusiveness and diversity on nonprofit boards, and to advance the cultural competency and sensitivity among nonprofit leaders.

### 2021 Campaign Growth Supports Equity, Access, Opportunity and Initiatives

- **Nonprofit Training & Advancement Fund**  
Provides one-time training grants for up to \$1,000 for leadership development, succession planning, performance management, and frontline training support. The Fund has provided 51 grants totaling \$33,955.
- **Community Impact Support Fund**  
The Community Foundation recognizes that many of the organizations serving our friends and neighbors operate on shoestring budgets and often need small grants to make ends meet or when an unplanned expense occurs. For many years, the Foundation has been the first call for those nonprofits and now we are able to respond with our own pool of resources. Created to make responsive grants of \$5,000 or less—to date, the fund has provided 12 grants totaling \$25,000.
- **Collaborative Impact & Innovation Fund**  
This fund supports collaborative, cross-sector collective impact projects that promise to improve systems and outcomes for our most vulnerable community members. In 2022, a \$15,000 grant was made from this fund to support the Foundation’s ongoing efforts with the Green and Healthy Homes Initiative.®



### A Community Conversation—The Cost of Racism

**Tuesday, January 17, 2023**—National Day of Racial Healing  
Virtual Event 7:00 p.m.—8:00 p.m.

Join us for a virtual conversation with Heather McGhee, NY Times Bestselling Author of **The Sum of Us, What Racism Costs Everyone and How We Can Prosper Together**. McGhee will share proof of the benefits we gain when people come together across race to accomplish what we simply cannot do on our own. Together with our partners from Rochester Area Community Foundation, Community Foundation for Greater Buffalo and the Central New York Community Foundation, we look forward to honoring this important day and to exploring steps we can take to ensure we all prosper.

- **Racial Equity and Social Justice Fund**  
This fund was created in 2021 to support efforts that advance equity, inclusion, and social justice throughout the Greater Capital Region. Grants are directed to invest in Black, Indigenous, People of Color (BIPOC), LGBTQIA+ and other minoritized groups and organizations serving our community.

“Giving is an integral part of any successful entrepreneurial ecosystem. I give to ensure that women and girls have the same opportunities as men to start and grow their businesses in the Capital Region.”—Heidi Knoblauch, Ph.D., CFGCR Board of Directors

**Strengthening Capital Region Nonprofits**  
The Community Foundation offers tools and resources for professional and organizational development around helpful workshop topics—from business planning to program evaluation to helping to strengthen our region’s nonprofit sector.

- **Nonprofit Listening Tour**  
Capacity-building is designed to strengthen organizational leadership and build the skills of the staff and board. In this way, the Foundation can be part of the solution—helping to ensure that nonprofits have what they need to deliver on their mission.
- **Strategy Labs** are dedicated, deep-dive workshops focused on one pre-identified issue area. The goal of the workshop is to help the organizations develop real solutions and next steps to overcome the obstacles hindering their growth.
- **Strategy Sessions** Strategy sessions are short informal conversations to help nonprofit leaders to navigate change, align priorities, or build skillsets.
- **Summer Workshop Series**  
Throughout the Summer of 2022, the Community Foundation hosted a series of short workshops as an opportunity to gather online to share best practices and learn from industry experts about ways to maximize their efforts and strengthen their work.



# The Melissa Daniels Memorial Scholarship—

## A journey from grief to empowerment

Melissa Daniels was a social worker—a woman of profound strength and optimism. Throughout her lifelong health challenges, she continued her education, eventually achieving her dreams to support and empower others as a patient advocate.

When Melissa passed away after a long battle with cystinosis, a rare genetic disease, her sister Becky channeled her grief into honoring Melissa's dream of helping people in need. She rallied friends and family to give in Melissa's memory to establish the Melissa Daniels Memorial Scholarship. Through this scholarship, Becky and her family honor Melissa and continue to celebrate her life through an annual scholarship to Becky and Melissa's alma mater, Schenectady High School. The scholarship is awarded to a student committed to becoming a helper, supporting the next generation of social workers.

In 2021, Gabriella Jones was chosen as a recipient. Gabriella is studying at SUNY Schenectady County to become a social worker. She is a 2021 graduate of Schenectady High School and, like Melissa, has big dreams. We met Gabriella on campus and Gabriella and Becky connected immediately.

**"I saw so much of my sister in Gabriella. Her kindness, openness, and incredible drive to achieve her dreams...it was so reminiscent of how Melissa approached her education and goals. I'm so proud that our fund could help her on her journey."**  
— Becky Daniels



# Scholarships

## The Beta Psi Scholarship

In 2021 the Community Foundation established the Beta Psi Scholarship Fund.

The *Beta Psi Scholarship Fund*, a collaboration with the Beta Psi Foundation and Beta Psi Boule, offers Capital Region students who demonstrate exemplary character and outstanding achievement and are of African American or African descent, an opportunity to apply for a \$1,000 scholarship award.

More importantly, the scholarship opens a network of opportunity to these exceptional students. The members of Beta Psi Boule and its Foundation include physicians, lawyers, engineers, professors, accountants, architects, educators, business owners, and state government managers.

**Members of Beta Psi Boule have achieved at the highest levels in their fields and are committed to supporting the next generation of African American students on their paths to achieve similar success.**

The first two recipients of the scholarship in 2021 were Olakunsi Peters and Tyrell Penalba. Olakunsi is a graduate of Doane Stuart school and is currently attending Brown University where she is studying Cognitive Neuroscience. Tyrell is a graduate of Troy High School and is studying Business at Ithaca College.



From left to right: Becky Daniels, Advisor, Melissa Daniels Memorial Scholarship. Gabriella Jones, Melissa Daniels Scholar 2021. Olakunsi Peters, Beta Psi Scholar 2021. Tyrell Penalba, Beta Psi Scholar 2021.



# A.C. Riley

**A.C. made a gift  
to establish the  
Almeda C. Riley Fund  
for Saratoga County—  
a fund to support  
the changing needs  
of her community.**

## A Lifetime of Service to Her Community

**G**rowing up in Wellsville, NY, A.C. was recruited as a volunteer at a very young age, tagging along beside her mother, often going door to door to gather support for the United Way or other local charities.

“I was fortunate to have parents who exhibited kindness, respect and compassion for others through their actions. Throughout my childhood I was encouraged to be curious, to ask questions and to seek opinions that may be different from my own,” remembered A.C. Her sense of curiosity shaped her professional career too. “Developing solutions to address a complex issue requires a clear understanding of many factors; problems are not one dimensional.”

Following graduation from Cornell University in 1958, A.C. moved to Saratoga Springs where she raised her four children. As she put down roots in Saratoga, she looked for ways to give back to support initiatives to strengthen the place she called home.

A.C.’s early experiences set the stage for what would become a lifetime of service. In 1975 she made her first run for public office and was elected to a five-year term on the Saratoga Springs Library Board. Never hindered by her gender, A.C. set out to meet as many new people as possible, and often in predominately male places. Her interest in others propelled her to be elected in 1979 as the first female Supervisor for Saratoga Springs, a position she held for eight years.

A.C. built her reputation on being a good listener and on being a person who worked toward building consensus and collaboration. It was no surprise that she went on to be the first female Mayor of Saratoga Springs, serving from 1990-1995.

A lifelong learner, A.C. continues to challenge herself with new ideas and is not wary of re-evaluating her position on a subject. Always generous with her time, A.C. has served on numerous nonprofit boards including Saratoga Hospital, Planned Parenthood at the local and national level, several alumni opportunities at Cornell University, League of Women Voters, a Trustee and Board Chair of The Sage Colleges, board service in both United Way of Saratoga County and Northeastern New York and the Community Foundation for the Greater Capital Region. She has also been active for 60 years at the Saratoga Springs United Methodist Church in various capacities.

“Through volunteer service I developed an appreciation for the importance of organizations and communities being able to adapt to the changing needs to support our region.” Several years ago, A.C. made a gift to establish the Almeda C. Riley Fund for Saratoga County, a future fund of the Community Foundation. When A.C. is not here to answer the call herself, her fund will be here to carry on her commitment to supporting the needs of Saratoga County, the place she calls home.



# Neil Golub

## Our Region's Greatest Ally

**Everyone needs a hero,  
and the Golubs have been ours.**

**“Leading in their commitment to family, to company, and to community, the Golubs created wide and open spaces for others to learn, to grow, to be safe and accepted, and to achieve great things. Their legacy and example is shared by the Community Foundation and inspires and challenges us as we look around at a world that sometimes seems upside down.”**

**—John Eberle, President & CEO**

**T**ogether, Neil and his late wife Jane championed causes that continue to enrich our lives today. They invested in programs that uplift, protect, and educate our neighbors and their shared commitment to our community is present in our everyday lives.

***Both Neil and Jane brought their individual passions and expertise to their giving.***

Neil's ability to grow a business has spread far beyond his supermarkets. Perhaps his strongest superpower is his capacity to see what could be – he has imagination. His vision has helped to create big change. From the Metroplex Development Authority, an economic engine that continues to fuel Schenectady's Renaissance to his investments

in projects that change individual lives.

As a teacher, Jane understood the power acceptance and a smile could have on a child. Her compassion for others led to her creation of the **“Be An Ally”** anti-bullying curriculum in 1986, decades before the subject was part of our daily conversation. Today, the **“No Place for Hate”** campaign is heralded as visionary and is used in schools across the nation.

We are grateful to the Golubs for their support and for the funds that they created at the Foundation which reflect and will carry on their legacy of dedication, hard work and transformative generosity. Their gifts and example will lift our region to new heights for many years to come.





## **A champion for our community.**

**“Stewarding the Liddle Family’s legacy holds special meaning for each of us at the Community Foundation.”**  
— **Mindy Derosia,**  
VP, Development

# Chuck Liddle

## **Loved his family and his community.**



**A**fter sharing nearly 30 years of his time, talent, and treasure with the Community Foundation, Chuck Liddle, longtime friend of the Foundation and champion for our community, passed away in early 2022.

In 1993 Chuck joined the board of the Community Foundation and he served the Foundation as Chairman from 2000-2004. Chuck went on to serve as a member of our finance committee until 2019. His steadfast watch over our portfolio, and his ongoing confidence in our long-term investment approach helped to guide the Foundation through the market crash of 2008.

He was proud when he saw a list of new funds or looked at our growth -- and he would beam when he heard stories about the impact of our grantmaking.

Chuck thought of family in a broader sense than most. He had lifelong friendships that

were an extension of his family, and if an organization or a cause were lucky – they were included in that circle too. In 1997 and then in 2005, Chuck established funds at the Community Foundation. Through his active advisement, he used the funds he had created to support many organizations with grants nearing \$600,000 since inception.

On one of our last visits, Chuck wanted to be sure that the funds he created were preserved for the organizations that he and his late wife Nancy had cared for, and set directives for the Foundation to follow when he passed. It was important to him that these organizations continue to feel their ongoing encouragement.

We are grateful for the provisions the Liddles made to ensure that their generosity and family values live on in the grantmaking of the Charles M. Liddle III and Nancy H. Liddle Designated Endowed Fund and the Nancy Hyatt Liddle Endowed Fund for the Arts.



2020-2021 Financial Summary

The Community Foundation remains steadfast in our commitment to strong internal controls, transparency, and accountability which we believe are fundamental to our fiduciary responsibility. The following chart provides financial figures as of December 31, 2021, with comparative information from the preceding 2019 and 2020 fiscal years.

Financial Highlights for the Fiscal Years Ending December 31

ASSETS	2021	2020	2019
Cash and Cash Equivalents	\$1,950,291	\$2,861,731	\$3,419,359
Investments	\$115,633,864	\$90,275,974	\$82,887,791
Receivables	\$1,380,485	\$869,931	\$2,085,206
Split Interest Agreements	\$890,573	\$1,301,582	\$1,246,056
Other Assets	\$371,862	\$384,163	\$401,096
TOTAL ASSETS	\$120,227,075	\$95,693,381	\$90,039,508
LIABILITIES			
Accounts Payable and Accrued Expenses	\$42,524	\$52,663	\$48,734
Grants Payable	\$296,327	\$1,068,161	\$239,306
Note Payable	\$0	\$137,500	\$0
Split Interest Agreements	\$269,302	383,997	\$389,363
Agency Funds	\$3,826,390	\$3,145,883	\$2,977,232
TOTAL LIABILITIES	\$4,434,543	\$4,788,204	\$3,654,635
NET ASSETS			
Without Donor Restrictions			
Available for Grants	\$41,303,955	\$37,267,507	\$37,530,290
Available for Administration	\$972,285	\$557,758	\$541,665
Endowed for Administration	\$8,175,079	\$6,949,683	\$6,035,070
	\$50,451,319	\$44,774,948	\$44,107,025
With Donor Restrictions	\$65,341,213	\$46,130,229	\$42,277,848
	\$115,792,532	\$90,905,177	\$86,384,873
TOTAL LIABILITIES and NET ASSETS	\$120,227,075	\$95,693,381	\$90,039,508

Review the Foundation’s complete audited financial statement: <https://www.cfgcr.org/about-the-foundation/financial-info>

“The level of professionalism, proactive communication, and stewardship of the Foundation’s charitable funds gives fund advisors confidence knowing they are in good hands.” —Alicia Lasch, Chair, Board of Directors

2020 BY THE NUMBERS

Total Gifts:	\$8,207,800*
Total Grants & Scholarships:	\$10,741,967*
Total Assets:	\$95,693,381
Number of Gifts:	1452
Number of Grants & Scholarships:	1659

\* Excluding fund-to-fund transfers; CFGCR 2020 Audited Financial Statement reflects Gifts: \$5,742,558/Grants: \$10,157,053

2021 BY THE NUMBERS

Total Gifts:	\$19,188,484*
Total Grants & Scholarships:	\$7,883,380*
Total Assets:	\$120,227,075
Number of Gifts:	1330
Number of Grants & Scholarships:	1386

\* Excluding fund-to-fund transfers; CFGCR 2021 Audited Financial Statement reflects Gifts: \$18,134,673/Grants: \$7,748,053

Stewardship, Transparency and Trust

At the Community Foundation for the Greater Capital Region, we understand it is a delicate balance: serve the needs of our region today while remaining financially sustainable to address the needs tomorrow. We are grateful to the Finance Committee of the Board of Directors for their role in monitoring the investment of our assets, as well as our managers at Prime Buchholz, LLC who implement our investment strategies.

As a public charity, the Community Foundation adheres to the highest standards to operate both in the public view and the public interest. As stewards of our region’s charitable assets, the Foundation holds our investment managers to the highest standards of ethical behavior and professional performance. This is part of our commitment to our donors and to the communities that we serve.

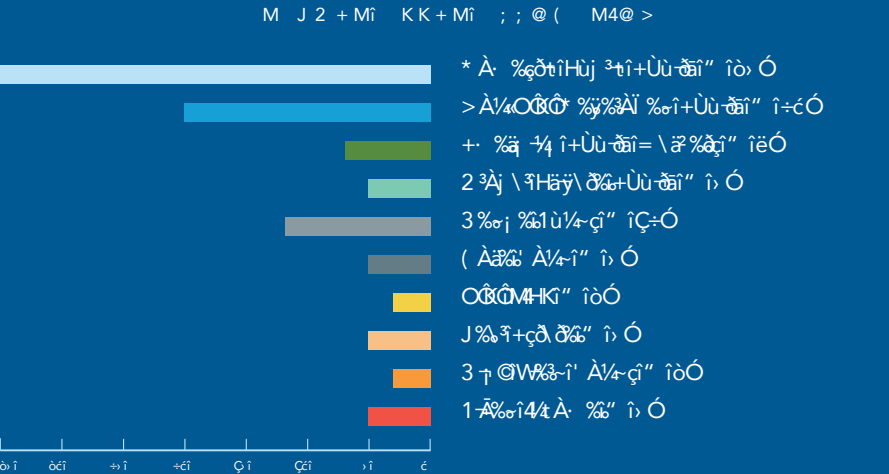
2022 Finance Committee

- Robert T. Hennes, Treasurer
- Alicia D. Lasch, Chair
- Robert S. Reynolds, Esq., Vice Chair
- Christopher Cimijotti, CPA, Audit Chair
- Robert Audi, CPA
- Belinda Hilton
- William Kahn, CPA\*
- Heidi Knoblauch, Ph.D.
- John A. MacAffer\*
- Eileen McLoughlin
- Jeffrey M. Rosenbaum, JD, CPA\*
- John Eberle, President & CEO
- Terry Mariano, Chief Financial Officer

\* Non-Board Member Approved by Board of Directors

A Diversified Portfolio

The Community Foundation’s investment portfolio is broadly diversified and has been designed to perform well in a variety of market conditions to generate long-term growth in excess of inflation while meeting near-term spending needs.





# Philanthropic Partnerships amplify impact

The Community Foundation partners with private and family foundations to provide administrative support, technical assistance and community expertise to amplify our shared impact.

## 2020-2021 Total Grantmaking

Review Foundation	\$526,200
John D. Picotte Family Foundation	\$309,564
Bender Family Foundation	\$377,156
B’nai B’rith Gideon Foundation	\$792,193
McCarthy Charities	\$1,010,000
Carl E. Touhey Foundation	\$1,000,000
NYSAR Housing Opportunities Foundation	\$112,000

\$4.1 Million

*“Working with private and family foundations amplifies the grantmaking of our family of funds at the Foundation, providing resources for immediate needs while expanding our learning community with the shared goal of supporting the nonprofits that work to raise our region.”*

—Shelly Connolly,  
VP, Community Grantmaking

# New Funds

## Create Opportunity for Our Community to Soar

- A.C. Riley Charitable Fund

Amalia Scholarship Fund for Higher Education

Arnold Cogswell Health Care Fund

Arthur H. Pedley Mathematics Scholarship

Beta Psi Scholarship Fund

Big Red Umbrella Fund

Business For Good Fund

Caffe Lena Endowment Fund

Charles M. III and Nancy H. Liddle Designated Endowed Fund

Charles Peer Advised Fund

Collaborative Impact and Innovation Fund

Community Impact Support Fund

Concetta Fund

Cooley Charitable Fund

Egna Sunshine Opportunity Fund

Elvira Scott Neumann Scholarship Fund

Ernest Otho Reaugh Advised Fund for LGBTQIA+ Advocacy

Evora H. & Roger C. Hinsdill Endowed Fund for Rensselaer County

Gibson Guild Foundation

Gloria DeSole and Meredith Butler Advised Fund

James “Coach” Connolly Track Scholarship

Joan S. Weill and Peter R. Weill Endowed Fund

John W. Elliott & Siclinda Canty-Elliott Donor Advised Fund

K.J. Johnson Family Foundation
- Marion’s Homes for All

Marsha and Stephen Ras Donor Advised Fund

Massry Family Fund

Matthew G. Waschull Designated Fund

Michael “Big Dog” Medvesky Memorial Scholarship

Michael Gregory Boyd Scholarship

Mugno/Trompeter Family Fund

Nonprofit Training and Advancement Fund

Norman Rice Fund for the Albany Institute of History and Art

Prescription for Progress Fund

Racial Equity & Social Justice Fund

Raymond Walker and Donna Mackey Donor Advised Fund

Reilly Family Fund

Robert A. and Susan Y. Cook Fund

Ryan Family Fund

Salamone Family Fund

Saratoga Arts Fund

Steel Trust Fund

Trinity Alliance of the Capital Region, Inc. Agency Endowment Fund

Vilma D. Elliott Designated Endowed Fund

Vilma D. Elliott Endowed Scholarship Fund

Whittenger Fund

Alpha list represents funds established 10/1/2020-04/30/2022.



# You Can Make a Difference!

Charitable giving is a powerful way to help make our world a better place.  
When you want to make a difference, the Community Foundation is here to help.

## **Create a Fund**

The Foundation offers a range of charitable funds. Support a cause or nonprofit that moves you, develop a family tradition of giving, honor a loved one's memory -- there are many reasons you might be inspired to start a fund and we are here to help you fulfill your philanthropic vision and help you meet your financial goals.

## **Leave a Legacy**

Naming the Community Foundation as a beneficiary in your will or estate plan is an effective way to ensure that your charitable vision will endure forever.

## **Support Your Community**

When you give to the Community Impact Fund, you are helping the Foundation meet the critical needs today and investing in a fund that will be ready to meet the challenges ahead.

# We Can Help!

